



DIGITAL ELITE™ SERIES

AUTO-DARKENING WELDING HELMETS



BLACK
P/N - 257213



LUCKY'S SPEED SHOP
P/N - 257214



INFERNO
P/N - 257217



JOKER
P/N - 257218

DESIGNED BY WELDERS FOR WELDERS



NEW 3 YEAR WARRANTY

Designed to withstand industrial environments, Miller helmets now come with a 3 year warranty (Auto-darkening lens only).



NEW LIGHTWEIGHT HEADGEAR

Designed with user comfort in mind, the headgear has multiple adjustability settings to achieve the best fit.



NEW IMPROVED DIGITAL CONTROLS

Allows the user to easily adjust mode and settings.

NEW TESTED TO AUSTRALIAN STANDARDS

The Miller Digital Elite Series™ have been tested in Australia and comply with High Impact AS/NZS 1337.1 and AS/NZS 1338.1.

FOUR INDEPENDENT ARC SENSORS

Provide continuous arc sensing for the most demanding applications plus superior lens response.

BATTERY POWERED WITH SOLAR ASSIST

Provides exceptionally long life. Replaceable battery.

MAGNIFYING LENS COMPATIBLE

Add a magnifying lens if required*. *Magnifying lens not included.*

SUITS A WIDE RANGE OF WELDING PROCESSES

MIG, Stick, TIG, Flux Cored and Pulse.

LIGHTWEIGHT

At only 510g, the helmet can be worn for long periods, keeping operator fatigue to a minimum.

BONUS ACCESSORIES INCLUDED:

- > 5 outside cover lenses
- > 2 inside cover lenses
- > Helmet bag

DIGITAL LENS TECHNOLOGY

WELD	Suits MIG, Stick, TIG, Flux Cored and Pulse welding processes. Shades 9-13.
CUT	Suits Plasma, Laser, Gas welding and cutting applications. Shades 5-9.
GRIND	Suits weld preparation and clean-up. Fixed shade 3.
X-MODE	Electromagnetic arc sensing technology eliminates sunlight interference, intermittent sensing (pipe), low amperage lens openings (TIG) and obstructed sensors. Shades 9-13.



HOBART

welding.com.au 1300 300 884



DIGITAL ELITE™ SERIES

AUTO-DARKENING WELDING HELMETS

PRODUCT SPECIFICATIONS

PRODUCT SPECIFICATIONS	
Viewing Area	97 x 60mm
Operating Modes	4 Modes: Weld, Cut, Grind, X-Mode
Arc Sensors	4 Independent Sensors Plus X-Mode
Variable Shades	9-13
Light State	4 (All Modes)
Grind Mode	Shade 4
Cut Mode	Shades 5-9
X-Mode*	Shades 9-13
TIG Rating	5 Amps and Below
Power	Replaceable Lithium Battery up to 3000 Hours
Switching Speed (Light - Dark)	1/20,000 Sec

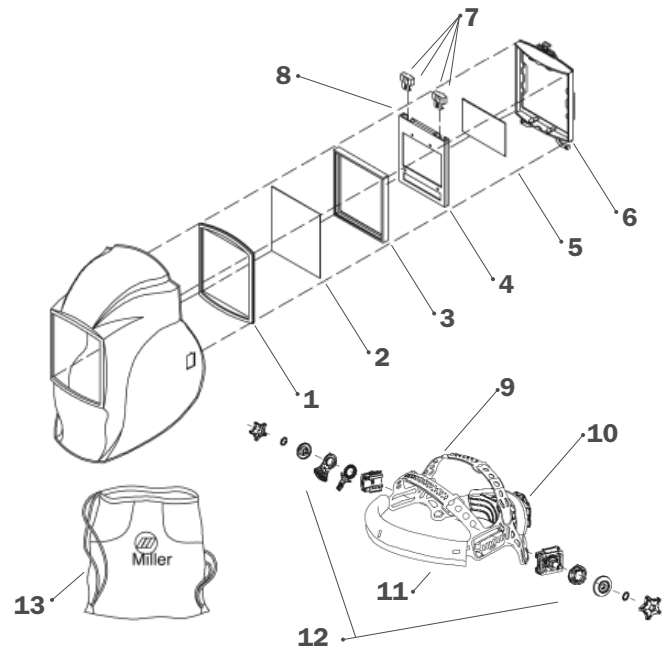
PRODUCT SPECIFICATIONS	
Delay Speed (Dark - Light)	0.10-1.0 Sec
On/Off Control	Automatic
Magnifying Lens Holder	Yes
Weight	510g
Standards	Complies with AS/NZS 1337.1, AS/NZS 1338.1, ANSI Z87.1 2003 (High Impact) DIN/TUV/CSA, AS/NZ 1337.1 and AS/NZ 1338.1
Warranty	3 Years (Auto-Darkening Lens Only)
Rec. Amps GMAW (MIG) MMAW (Stick)	Up to 400 Amps**
Rec Amps GTAW (TIG)	5-350 Amps**

*X-Mode eliminates sunlight interference, intermittent sensing (pipe), low amperage lens openings (TIG) and obstructed sensors.

**Amperage ratings may vary for processes involving aluminium and stainless steel.

REPLACEMENT PARTS & ACCESSORIES

PARTS AND ACCESSORIES	
1. Front Lens Gasket	P/N - 216337
2. Front Lens Cover (5 Pk)	P/N - 216326P
3. Gasket - Auto-Darkening Lens	P/N - 234758
4. Lens Filter	P/N - 256469
5. Inside Lens Cover	P/N - 216327P
6. Lens Holder	P/N - 234759
7. Battery Holder (Left & Right)	P/N - 216339
8. Replacement Lithium Battery (x2)	P/N - 217043
9. Ratchet Headgear	P/N - 256174
10. Comfort Cushion	P/N - 216336
11. Sweatband Towelling (5 Pk)	P/N - 770249
12. Adjustment Angle/Stop Kit	P/N - 256178
13. Helmet Carry Bag with Miller Logo	P/N - 770250



HOBART

welding.com.au 1300 300 884